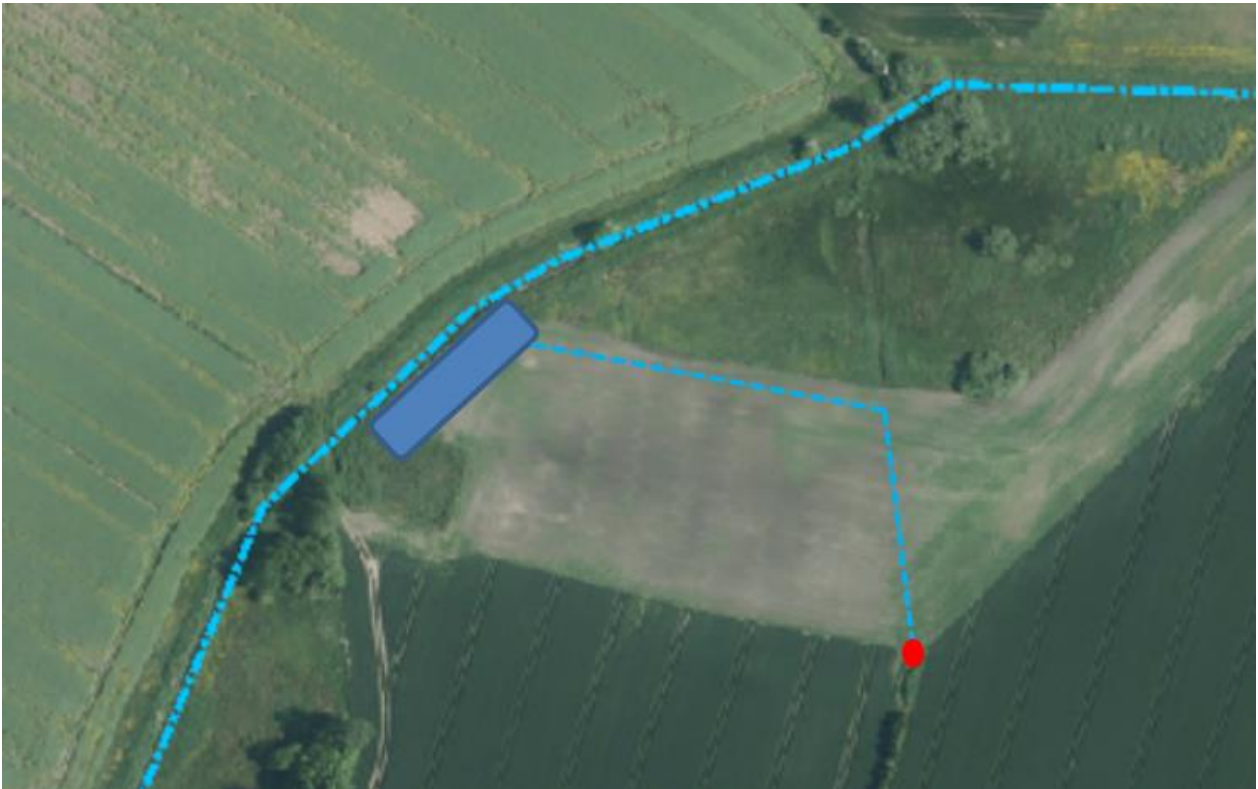


Environmental improvements in pilot area using targeted measures

Intelligent bufferzone IBZ, at Vils on the Island Mors in Limfjord Catchment

In corporation with farmer Svend Erik Villadsen at Vils the test pilot Catchment officer Anders Lehnhardt in 2016 found the site for the IBZ. It was built in 2017 but not funded from WaterCoG..

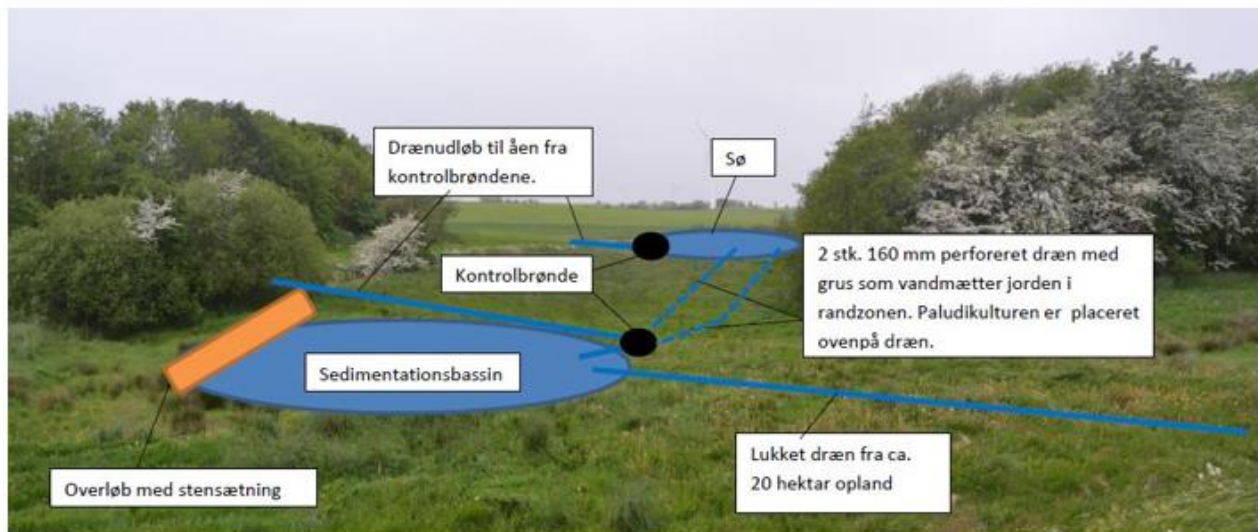
A ditch with alder trees taking in water from a field drain and cleaning before water goes into stream



Saturated bufferzone in catchment Hagens Møllebæk in Limfjord Catchment

In corporation with farmer Jesper Thomsen at Hagens Møllebæk the test pilot Catchment officer Anders Lehnhardt in 2016 found the site for the buffer. It was built in 2017 but not funded from WaterCoG.

A pond is receiving water from a field drain and letting water into drains so the water infiltrate the soil. The soil is wetted and planted with *Miscanthus giganteus* (a large, perennial grass). The water will then infiltrate into the stream. In case of high water flows the water will go into a next pond where there is connection to the stream.



Principskitse af miljøtiltaget

